



Coffee Brief

Date: 7/21/2025

Preparedness Levels & Alaska Fire Activity

| | | |
|----------|---|---|
| National | 4 | Light IA Nationally – New Fires 86 |
| Alaska | 3 | Light Initial Attack Activity (as of 0700)- New Fires and Acres: 2 fires, 13 acre Large Fire Growth: ~ 1,583 acres |

Sources: National and AICC Situation Dashboard

Prioritized Incident Details

| ALASKA MAC GROUP PRIORITIES – DECISION 7/18/2025 | |
|--|--|
| 1. Initial Attack | |
| 2. | #903 Nenana Ridge Complex (CIMT AK 2), FAS |
| 3. | #223 Himalaya Road (CIMT RM 2), FAS |
| 4. | #902 Roundabout Complex (TOC T3 7/17), GAD |
| 5. | #904 Goldrun Complex, (IMT3 WY) GAD |
| 6. | #218 Ninetyeight (T3), MID |
| 7. | #199 Lush (T3), TAD |
| | |
| | |
| | |

Source: AMAC Incident Prioritization List, ICS-209s

Resources

- Pending Crew Orders

| Current Pending | Count of Request Name |
|-----------------------------|-----------------------|
| CR1I - Crew, Type 1 or 2 IA | 0 |
| CR2I - Crew, Type 2 IA | 0 |
| CRW1 - Crew, Type 1 | 0 |
| CRW2 - Crew, Type 2 | 0 |
| Grand Total | 0 |

Resources within the GACC *(Tactical and Committed to Incidents)*

| Resources | |
|---------------------------------|-----|
| Smoke Jumpers | ~35 |
| LAT's | 2 |
| Scoopers (Multi/Single) | 8 |
| AA / ASM | 2 |
| T1 Helicopter | 1 |
| T2 Helicopter | 10 |
| T3 Helicopter | 18 |
| T1 Crews | 11 |
| T2IA Crews | 5 |
| T2 Crews (Agency / Contract) | 9 |
| Suppression Module | 8 |
| Wildland Fire Module (Type 1/2) | 4 |

Source: IROC Reports

Weather Summary

Southwest flow has setup over Alaska today, bringing moisture to much of the Interior and northern AK. The west and western Interior have already received widespread wetting rains and will continue to do so through Wednesday. In the central and eastern Interior, significant showers are expected today, with decreasing showers for Tuesday and Wednesday. Today's heaviest rain is expected along the northern Interior, while the chance for thunderstorms is confined farther north, along the North Slope, becoming minimal tomorrow. Breezy west to southwest winds are forecasted for much of the state today.

With a large ridge over the Gulf of Alaska, the southern part of the state will be warm and dry today and tomorrow, with high temperatures in the upper 70s for Copper River Basin and parts of the Panhandle.

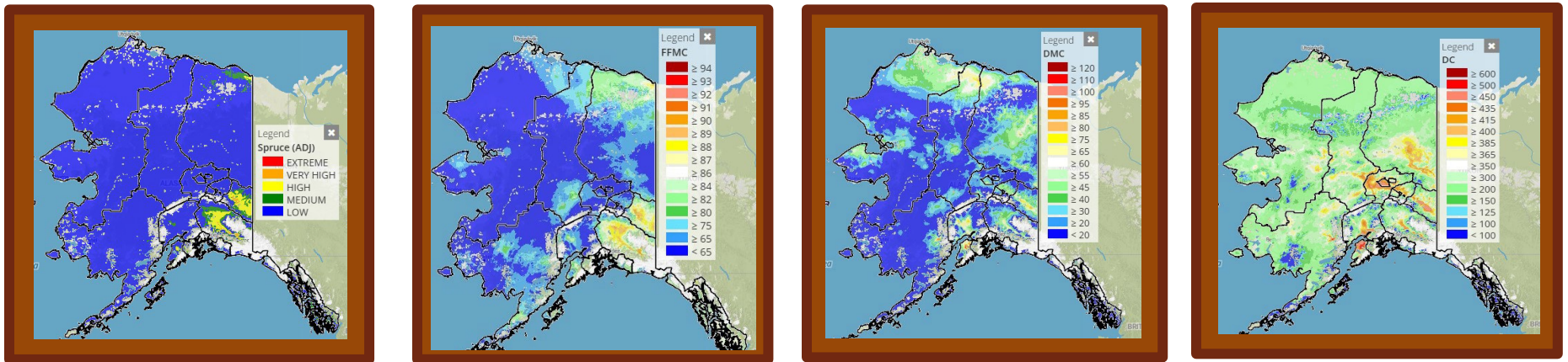
The longwave trough sets up over Alaska on Wednesday. The southeast mainland will get a shot of moisture at this point as a trough develops over the central Gulf of Alaska and the Southwest gets a light soaking as the low off the western coast drops across it and into the Gulf on Thursday. Showers and thunderstorms are possible across much of the state for the end of the workweek. By next weekend, ridging building in from the northeast will warm and dry the eastern Interior once again.

Source: Alaska 7-Day Outlook

Fuels/Fire Potential

In the west, wetting rains have dampened fuels at all layers, making fire activity very low for the foreseeable future there. In the east, spotty precipitation has dampened surface fuels in all but the far southeast Interior. The uppermost part of the Tanana Valley, as well as Copper River Basin and the Panhandle, have all remained quite dry and fuels in these locations have the most potential for fire growth today and tomorrow. In particular, breezy winds in the Tanana Valley and near Haines and Skagway provide the most potential for fire spread. Parts of the Upper Yukon may also be a bit drier, though clouds, cooler temperatures, and higher humidities are likely to keep fires from doing anything but smoldering there. This pattern is likely to hold through Wednesday, at which point a drying trend may bring more Interior stations back to burnable surface fuels once again.

Fuels Status [Alaska Fire and Fuels Map](#)




For additional fuels information visit <https://akff.mesowest.org/>

Sources: AICC Predictive Services – Fuels/Fire Danger web page, Alaska Fire & Fuels web page

Notable from around the State and additional links for information

Link to the Risk Management Assistance Dashboard Intel Matrix for AK is now available at <https://arcg.is/10DD43>

Links to SharePoint IMT/Crew Tracking Spreadsheets:

Crew Glidepath -  [2025 Crew Tracking Report.xlsx](#)

IMT Assignments -  [AICC IMT Tracking Report - ConditionalFormatting_updatedv3.xlsx](#)

The Coffee Brief is posted at PLs 4 and 5 only.

